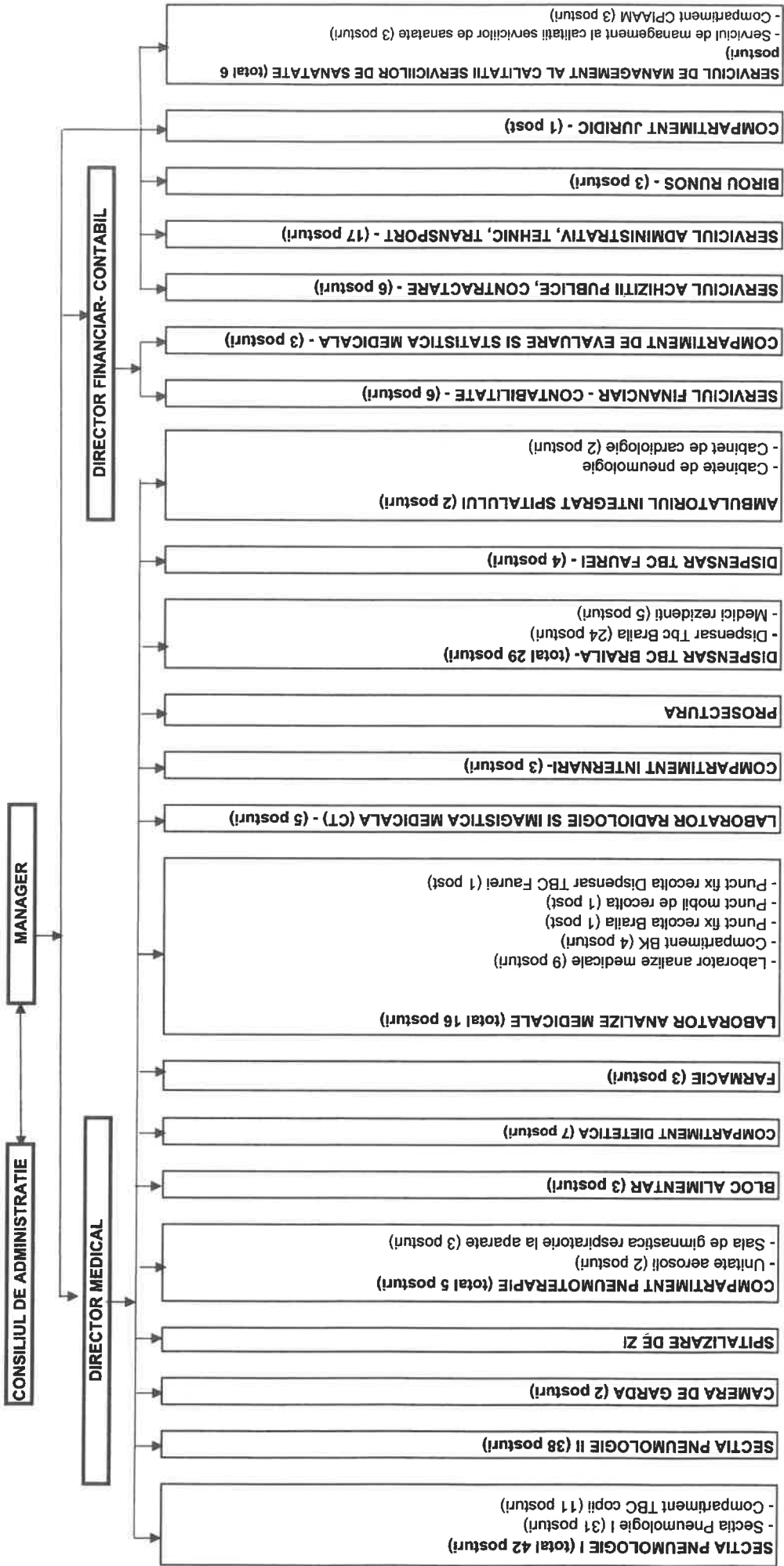


152 Paturi - spitalizare continua
 10 Paturi - spitalizare de zi
 204 posturi

ANEXĂ NR. 1 LA HCY NR. 253/2023



MANAGER,
 EC. SINFETRUSTEAN

152 Paturi- Spitalizare continua
10 Paturi- Spitalizare de zi

14 Functii de conducere
190 Functii de executie

STAT DE FUNCTIUNI

CONDUCERE

Nr Crt.	Denumirea functiei	Grad profesional	Studii	Grad	Post	Observatii
1	Manager	IA	S	II	1.0	
2	Director financiar-contabil	IA	S	II	1.0	
3	Director medical	Primar	S	II	1.0	

Total CONDUCERE 3.0

SECTII MEDICALE SPITAL

SECTIA PNEUMOLOGIE I

Nr Crt.	Denumirea functiei	Grad profesional	Studii	Grad	Post	Observatii
4	Sef sectie		S	II	1.0	
5	Medic	Primar	S		1.0	
6	Medic	Primar	S		1.0	
7	Medic	Specialist	S		1.0	SUSPENDAT TEMPORAR
8	Medic	Specialist	S		1.0	
9	Asistent sef	Principal	PL	II	1.0	
10	Asistent medical	Principal	PL		1.0	
11	Asistent medical	Principal	PL		1.0	
12	Asistent medical	Principal	PL		1.0	
13	Asistent medical	Principal	PL		1.0	
14	Asistent medical	Principal	PL		1.0	
15	Asistent medical		PL		1.0	
16	Asistent medical	Principal	PL		1.0	
17	Asistent medical	Principal	PL		1.0	SUSPENDAT TEMPORAR
18	Asistent medical	Principal	PL		1.0	
19	Asistent medical	Principal	PL		1.0	SUSPENDAT TEMPORAR
20	Asistent medical	Principal	PL		1.0	
21	Asistent medical	Principal	PL		1.0	
22	Asistent medical	Principal	S		1.0	
23	Asistent medical	Principal	PL		1.0	SUSPENDAT TEMPORAR
24	Asistent medical	Principal	S		1.0	
25	Infirmiera		G		1.0	
26	Infirmiera		G		1.0	
27	Infirmiera		G		1.0	
28	Infirmiera				1.0	

29	Infirmiera		G		1.0	
30	Infirmiera		G		1.0	
31	Infirmiera		G		1.0	
32	Ingrijitoare		G		1.0	
33	Ingrijitoare		G		1.0	
34	Ingrijitoare		G		1.0	

Total SECTIA PNEUMOLOGIE I	31.0
-----------------------------------	-------------

COMPARTIMENT TBC COPII

35	Medic	Primar	S		1.0	MEDIC COORD.
36	Asistent medical	Principal	PL		1.0	ASISTENT COORD.
37	Asistent medical	Principal	PL		1.0	
38	Asistent medical	Principal	PL		1.0	
39	Asistent medical	Principal	PL		1.0	
40	Asistent medical	Principal	PL		1.0	
41	Infirmiera		G		1.0	
42	Infirmiera		G		1.0	
43	Infirmiera		G		1.0	
44	Infirmiera		G		1.0	
45	Infirmiera		G		1.0	

Total COMPARTIMENT TBC COPII	11.0
-------------------------------------	-------------

Total SECTIA PNEUMOLOGIE I	42.0
-----------------------------------	-------------

SECTIA PNEUMOLOGIE II

Nr Crt.	Denumirea functiei	Grad profesional	Studii	Grad	Post	Observatii
46	Sef sectie		S	II	1.0	
47	Medic	Specialist	S		1.0	MEDIC COORD. AMBULATORIU
48	Medic	Specialist	S		1.0	
49	Medic	Primar	S		1.0	
50	Medic	Primar	S		1.0	
51	Medic	✓	S		1.0	VACANT
52	Asistent medical	Principal ✓	PL		1.0	ASISTENT SEF UNITATE
53	Asistent sef	Principal	PL	II	1.0	
54	Asistent medical	Principal	S		1.0	
55	Asistent medical	Principal	S		1.0	
56	Asistent medical	Principal	PL		1.0	
57	Asistent medical		PL		1.0	
58	Asistent medical	Principal	PL		1.0	
59	Asistent medical	Principal	S		1.0	
60	Asistent medical	Principal	PL		1.0	
61	Asistent medical	Principal	PL		1.0	
62	Asistent medical	Principal	PL		1.0	
63	Asistent medical	Principal	PL		1.0	
64	Asistent medical	Principal	PL		1.0	
65	Asistent medical	Principal	PL		1.0	
66	Asistent medical	Principal	PL		1.0	
67	Asistent medical	Principal	PL		1.0	
68	Asistent medical	Principal	PL		1.0	
69	Asistent medical		PL		1.0	
70	Asistent medical	Principal	PL		1.0	
71	Infirmiera		G		1.0	
72	Infirmiera		G		1.0	
73	Infirmiera		G		1.0	
74	Infirmiera		G		1.0	
75	Infirmiera		G		1.0	
76	Infirmiera		G		1.0	
77	Infirmiera		G		1.0	
78	Infirmiera		G		1.0	
79	Infirmiera		G		1.0	
80	Infirmiera		G		1.0	
81	Ingrijitoare		G		1.0	
82	Ingrijitoare		G		1.0	
83	Ingrijitoare		G		1.0	

Total SECTIA PNEUMOLOGIE II
38.0

CAMERA DE GARDA

Nr Crt.	Denumirea functiei	Grad profesional	Studii	Grad	Post	Observatii
84	Asistent medical		PL		1.0	
85	Asistent medical	Principal	PL		1.0	

Total CAMERA DE GARDA **2.0**

COMPARTIMENT PNEUMOTERAPIE**UNITATE AEROSOLI**

86	Asistent medical		PL		1.0	VACANT
87	Ingrijitoare		G		1.0	VACANT

Total UNITATE AEROSOLI **2.0**

SALA DE GIMNASTICA RESPIRATORIE LA APARATE

88	Kinetoterapeut		S		1.0	VACANT
89	Kinetoterapeut		S		1.0	VACANT
90	Ingrijitoare		G		1.0	VACANT

Total SALA DE GIMNASTICA RESPIRATORIE LA APARATE **3.0**

Total COMPARTIMENT PNEUMOTERAPIE **5.0**

BLOC ALIMENTAR

Nr Crt.	Denumirea functiei	Grad profesional	Studii	Grad	Post	Observatii
91	Muncitor calificat	I	G		1.0	
92	Muncitor calificat	III	G		1.0	
93	Ingrijitoare		G		1.0	

Total BLOC ALIMENTAR **3.0**

COMPARTIMENT DIETETICA

Nr Crt.	Denumirea functiei	Grad profesional	Studii	Grad	Post	Observatii
94	Asistent medical	Principal	PL		1.0	ASISTENT COORD.
95	Infirmiera		G		1.0	
96	Infirmiera		G		1.0	
97	Infirmiera		G		1.0	
98	Infirmiera		G		1.0	
99	Infirmiera		G		1.0	VACANT
100	Infirmiera		G		1.0	VACANT

Total COMPARTIMENT DIETETICA **7.0**

LABORATOR RADIOLOGIE SI IMAGISTICA MEDICALA (CT)

Nr Crt.	Denumirea functiei	Grad profesional	Studii	Grad	Post	Observatii
101	Medic	Primar	S		1.0	MEDIC COORD.
102	Asistent medical	Principal	S		1.0	ASISTENT COORD.
103	Asistent medical	Principal	PL		1.0	
104	Asistent medical	Principal	PL		1.0	
105	Asistent medical	Principal	PL		1.0	

Total LABORATOR RADIOLOGIE SI IMAGISTICA MEDICALA (CT) 5.0

FARMACIE

Nr Crt.	Denumirea functiei	Grad profesional	Studii	Grad	Post	Observatii
106	Farmacist sef	Specialist	S	II	1.0	
107	Asistent medical	Principal	PL		1.0	
108	Asistent medical	Principal	PL		1.0	

Total FARMACIE **3.0**

LABORATOR ANALIZE MEDICALE

Nr Crt.	Denumirea functiei	Grad profesional	Studii	Grad	Post	Observatii
109	Sef laborator		S		1.0	SUSPENDAT TEMPORAR
110	Biolog	Specialist	S		1.0	
111	Biolog	Specialist	S		1.0	
112	Asistent medical	Principal	PL		1.0	
113	Asistent medical	Principal	PL		1.0	
114	Asistent medical	Principal	PL		1.0	
115	Registrator medical		M		1.0	
116	Registrator medical		M		1.0	
117	Ingrijitoare		G		1.0	

Total LABORATOR ANALIZE MEDICALE **9.0**

COMPARTIMENT BK

118	Biolog	Principal	S		1.0	BIOLOG COORD.
119	Asistent medical	Principal	PL		1.0	
120	Asistent medical		PL		1.0	
121	Ingrijitoare		G		1.0	

Total COMPARTIMENT BK **4.0**

Punct fix recolta Braila

122	Asistent medical		PL		1.0	VACANT
-----	-------------------------	--	----	--	-----	--------

Total Punct fix recolta Braila **1.0**

Punct mobil de recolta

123	Asistent medical		PL		1.0	VACANT
-----	-------------------------	--	----	--	-----	--------

Total Punct mobil de recolta **1.0**

Punct fix recolta dispensar TBC Faurei

124	Asistent medical		PL		1.0	VACANT
-----	-------------------------	--	----	--	-----	--------

Total Punct fix recolta dispensar TBC Faurei **1.0**

Total LABORATOR ANALIZE MEDICALE **16.0**

COMPARTIMENT DE EVALUARE SI STATISTICA MEDICALA

Nr Crt.	Denumirea functiei	Grad profesional	Studii	Grad	Post	Observatii

125	Asistent medical	Principal	PL		1.0	ASISTENT COORD.
126	Analist	IA	S		1.0	
127	Economist	IA	S		1.0	

Total COMPARTIMENT DE EVALUARE SI STATISTICA MEDICALA **3.0**

SERVICIUL DE MANAGEMENT AL CALITATII SERVICIILOR DE SANATATE

Nr Crt.	Denumirea functiei	Grad profesional	Studii	Grad	Post	Observatii
128	Sef serviciu		S	II	1.0	
129	Referent de specialitate	IA	S		1.0	
130	Economist	IA	S		1.0	SUSPENDAT TEMPORAR

Total SERVICIUL DE MANAGEMENT AL CALITATII SERVICIILOR DE SANATATE 3.0

COMPARTIMENT CIAAM

Nr Crt.	Denumirea functiei	Grad profesional	Studii	Grad	Post	Observatii
131	Medic	Specialist	S		1.0	SUSPENDAT TEMPORAR
132	Asistent medical		PL		1.0	
133	Asistent medical		PL		1.0	VACANT

Total COMPARTIMENT CIAAM 3.0

Total SERVICIUL DE MANAGEMENT AL CALITATII SERVICIILOR DE SANATATE 6.0

COMPARTIMENT INTERNARI

Nr Crt.	Denumirea functiei	Grad profesional	Studii	Grad	Post	Observatii
134	Registrator medical		M		1.0	
135	Registrator medical		M		1.0	
136	Registrator medical		M		1.0	

Total COMPARTIMENT INTERNARI 3.0

TOTAL SPITAL 136.0

DISPENSAR TBC**DISPENSAR TBC BRAILA**

Nr Crt.	Denumirea functiei	Grad profesional	Studii	Grad	Post	Observatii
137	Asistent medical	Principal	PL		1.0	ASISTENT COORD.
138	Asistent medical	Principal	PL		1.0	
139	Asistent medical	Principal	PL		1.0	
140	Asistent medical	Principal	PL		1.0	
141	Asistent medical	Principal	PL		1.0	
142	Asistent medical	Principal	PL		1.0	
143	Asistent medical	Principal	PL		1.0	
144	Asistent medical	Principal	PL		1.0	
145	Asistent medical	Principal	PL		1.0	
146	Asistent medical	Principal	PL		1.0	
147	Asistent medical	Principal	PL		1.0	
148	Asistent medical	Principal	PL		1.0	
149	Asistent medical	Principal	PL		1.0	
150	Asistent medical	Principal	PL		1.0	
151	Asistent medical	Principal	PL		1.0	
152	Asistent medical	Principal	PL		1.0	

153	Asistent medical	Principal	PL		1.0	
154	Asistent medical	Principal	S		1.0	
155	Asistent medical	Principal	PL		1.0	
156	Asistent medical		PL		1.0	
157	Statistician medical	Principal	M		1.0	
158	Registrator medical	Principal	M		1.0	
159	Ingrijitoare		G		1.0	
160	Ingrijitoare		G		1.0	

Total DISPENSAR TBC BRAILA **24.0**

MEDICI REZIDENTI

Nr Crt.	Denumirea functiei	Grad profesional	Studii	Grad	Post	Observatii
161	Medic rezident	Anul IV-V	S		1.0	
162	Medic rezident	Anul I	S		1.0	
163	Medic rezident	Anul II	S		1.0	
164	Medic rezident	Anul II	S		1.0	
165	Medic rezident	Anul I	S		1.0	

Total MEDICI REZIDENTI **5.0**

Total DISPENSAR TBC BRAILA **29.0**

DISPENSAR TBC FAUREI

Nr Crt.	Denumirea functiei	Grad profesional	Studii	Grad	Post	Observatii
166	Asistent medical	Principal	PL		1.0	
167	Asistent medical	Principal	PL		1.0	
168	Registrator medical	Principal	M		1.0	
169	Ingrijitoare		G		1.0	

Total DISPENSAR TBC FAUREI **4.0**

TOTAL DISPENSAR TBC **33.0**

AMBULATORIUL INTEGRAT AL SPITALULUI

CABINET DE CARDIOLOGIE

Nr Crt.	Denumirea functiei	Grad profesional	Studii	Grad	Post	Observatii
170	Medic		S		1.0	VACANT
171	Asistent medical		S		1.0	VACANT

Total CABINET DE CARDIOLOGIE **2.0**

TOTAL AMBULATORIUL INTEGRAT AL SPITALULUI **2.0**

TOTAL SECTII MEDICALE **171.0**

APARAT FUNCTIONAL

SERVICIUL FINANCIAR-CONTABILITATE

Nr Crt.	Denumirea functiei	Grad profesional	Studii	Grad	Post	Observatii
172	Sef serviciu		S	II	1.0	

173	Economist	IA	S		1.0	SUSPENDAT TEMPORAR
174	Economist	IA	S		1.0	
175	Economist	IA	S		1.0	
176	Economist	IA	S		1.0	
177	Registrator medical		M		1.0	

Total SERVICIUL FINANCIAR-CONTABILITATE **6.0**

SERVICIU ACHIZITII PUBLICE, CONTRACTARE

Nr Crt.	Denumirea functiei	Grad profesional	Studii	Grad	Post	Observatii
178	Sef serviciu		S	II	1.0	
179	Economist	IA	S		1.0	
180	Economist		S		1.0	VACANT
181	Operator date	II	M		1.0	
182	Muncitor calificat	IV	G		1.0	
183	Muncitor calificat	I	G		1.0	

Total SERVICIU ACHIZITII PUBLICE, CONTRACTARE	6.0
--	------------

SERVICIU ADMINISTRATIV, TEHNIC, TRANSPORT

Nr Crt.	Denumirea functiei	Grad profesional	Studii	Grad	Post	Observatii
184	Sef serviciu		S	II	1.0	
185	Muncitor calificat	IV	G		1.0	
186	Muncitor calificat	I	G		1.0	
187	Muncitor calificat	I	G		1.0	
188	Muncitor calificat	IV	G		1.0	
189	Muncitor calificat	IV	G		1.0	
190	Muncitor calificat	I	G		1.0	
191	Muncitor calificat	IV	G		1.0	
192	Muncitor calificat	IV	G		1.0	
193	Muncitor calificat		G		1.0	VACANT
194	Muncitor calificat		G		1.0	VACANT
195	Muncitor calificat		G		1.0	VACANT
196	Spalatoreasa		G		1.0	
197	Spalatoreasa		G		1.0	
198	Spalatoreasa		G		1.0	
199	Spalatoreasa		G		1.0	
200	Ingrijitoare		G		1.0	

Total SERVICIU ADMINISTRATIV, TEHNIC, TRANSPORT	17.0
--	-------------

BIROU RUNOS

Nr Crt.	Denumirea functiei	Grad profesional	Studii	Grad	Post	Observatii
201	Sef Birou		S	II	1.0	
202	Referent de specialitate		S		1.0	VACANT
203	Psiholog	Practicant	S		1.0	

Total BIROU RUNOS **3.0**

COMPARTIMENT JURIDIC

Nr Crt.	Denumirea functiei	Grad profesional	Studii	Grad	Post	Observatii
204	Consilier juridic	IA	S		1.0	

Total COMPARTIMENT JURIDIC **1.0**

TOTAL SERVICII AUXILIARE **33.0**

TOTAL GENERAL **204**

Manager,

Ec. Sîmpetru Ștefan



Intocmit,

Birou Runos
Sef birou Malinche Diana